

COVID

Response Report



INDEX

Covid-19 Update **02**

The Deaf Reach Program **02**

Adapting to A New Reality:
Recent Covid-19 response
activities **03**

Survey of families with
students enrolled in
Deaf Reach **05**

Going Forward:
The Distance Learning
Program **05**

How You Can Help **07**

COVID-19 UPDATE

With the Covid-19 pandemic impacting everyday life, Deaf Reach faces new challenges. As we acclimate to these unprecedented conditions, we will continue serving the Deaf community to the best of our ability.

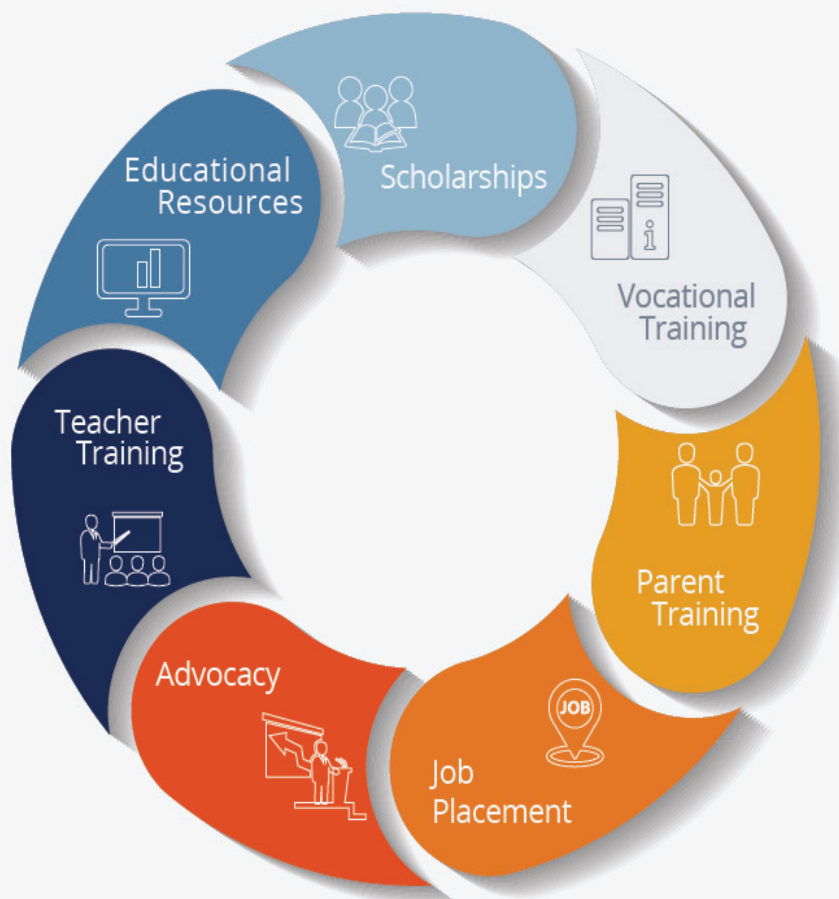
In order to ensure the well-being of our students, teachers, staff and their families **we have made necessary modifications to our operations that we would like to share with you.** Every decision we make is being guided by our long-standing commitment towards the betterment of our students and the Deaf community at large across Pakistan.

THE DEAF REACH PROGRAM

In Pakistan there are over 1 million deaf children, yet less than 5% attend school.

For the past 3 decades, FESF has focused on bridging this gap via its Deaf Reach Program, operating one of the only branch network school systems for the Deaf in Pakistan, and employing over 350 full-time salaried teachers and staff.

7 Deaf Reach Schools, Training Centers, and Colleges provide free education and skills training for deaf students and boast a 40% female attendance. The campuses are located in Karachi, Hyderabad, Sukkur, Rashidabad-Tando Allahyar, Nawabshah, Lahore and Jhelum. Facilities cover all academic and vocational costs, inclusive of free pick and drop transport in a 50 km. radius, healthy lunch, books and stationery, uniforms and excursions.



FESF has received international and national recognition for program excellence and award winning digital content creation.



WISE Award for Innovation in Education 2018, Doha Qatar:

Award presented at the United Nations, New York



NetHope Award 2017:

Sponsored by GOOGLE for Pakistan Sign Language resources



PASHA Award 2016 and 2018:

Pakistan Assoc. of Software Houses for online educational content

ADAPTING TO A NEW REALITY: RECENT COVID-19 RESPONSE ACTIVITIES

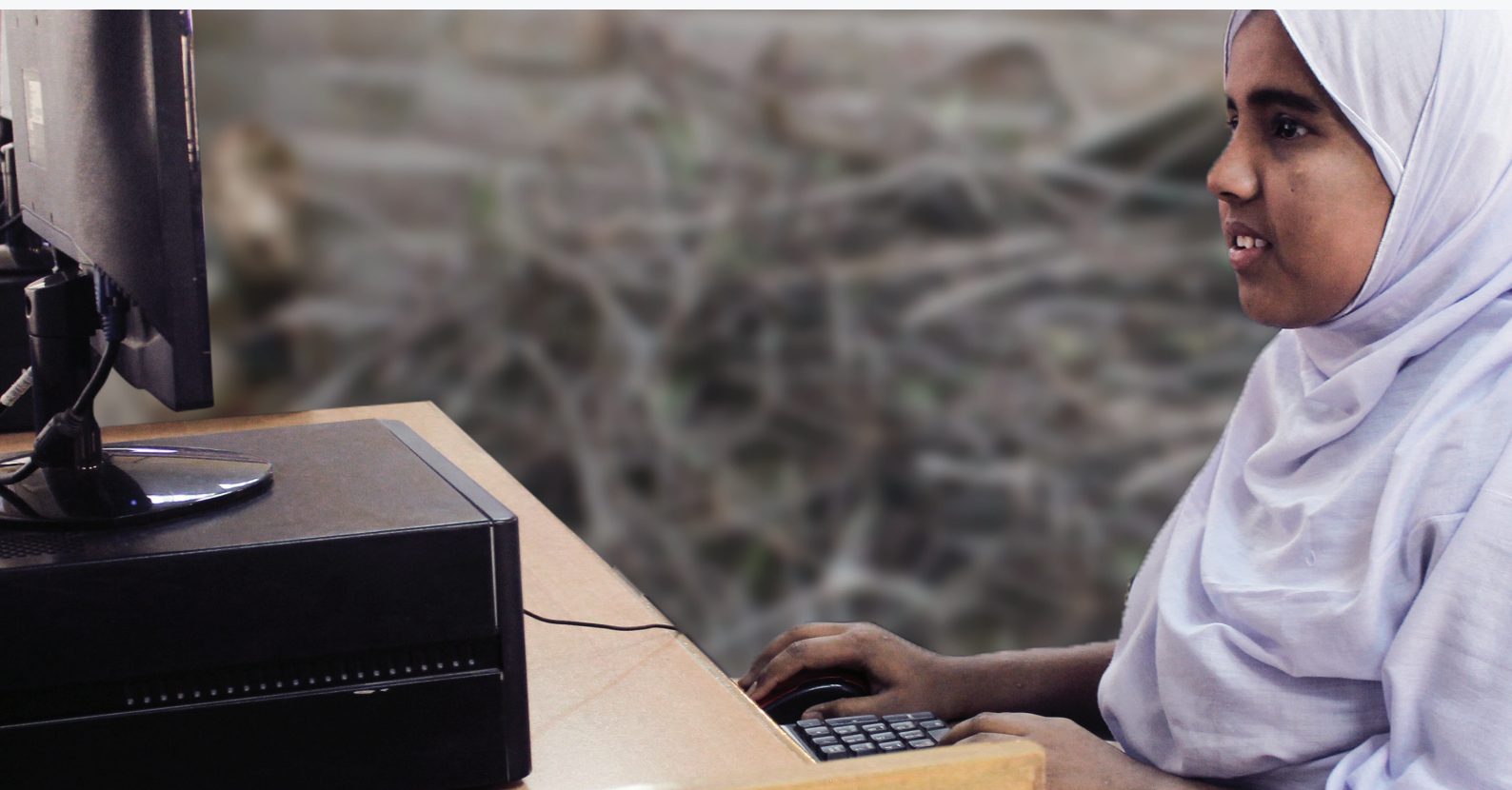
Deaf children are one of the most vulnerable groups within the disability sector. The majority belong to low-income families and are highly marginalized, often deprived of education and language development. These families frequently lack access to basic utilities and struggle to meet essential needs, especially during this pandemic.

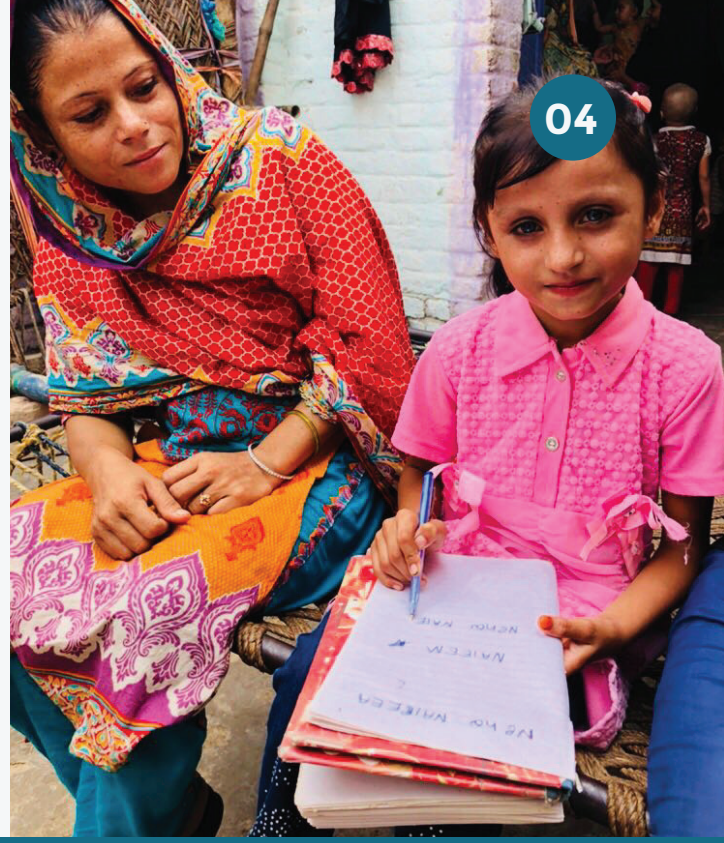
Our schools are presently closed, but during this time we have been very active in caring for our deaf students and their families, as well as in providing timely and crucial information to the Deaf community countrywide.

Following are some of the Program Activities carried on over the past months:

THE RATION PROGRAM

Deaf Reach has provided a monthly basic food basket of Rs. 5,000 value to our 1,200+ Deaf students and their families, as well as more than 100 of our lower income staff and their families. The majority of these live in rural Sindh villages and katchi abadi areas.





گندے ہاتھ وائرس کو آپ کی آنکھوں، ناک یا منہ میں منتقل کر کے آپ کو بیمار کر سکتے ہیں۔

OPERATIONAL CHANGES AT DEAF REACH

All our teachers have been retained and continue to work remotely. We have developed a comprehensive online training program to ensure their continued professional development, with a focus on improving their sign language and teaching skills.

INFORMATION AND AWARENESS CONTENT FOR THE DEAF COMMUNITY

Deaf Reach has been creating timely and important health and hygiene information available in sign language for the Deaf community across Pakistan. Due to the obvious language barrier, they are most often excluded from accessing news channels and other social platforms.

Working with both the Governments of Sindh and Punjab, Deaf Reach created a series of short informational videos in sign language for understanding Covid-19. Local channels have continued to broadcast these videos, reaching the Deaf community nationwide.

PARTNERSHIP WITH TCF AND TELESCHOOL

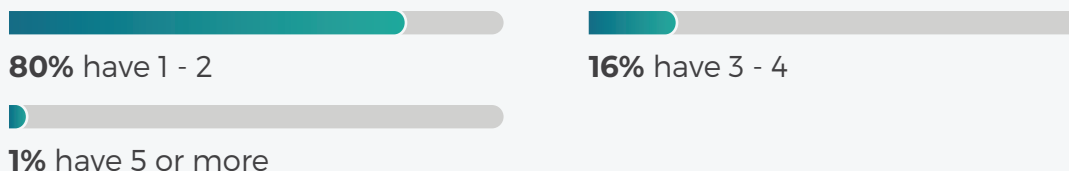
Deaf Reach has partnered with The Citizens Foundation (TCF) in their weekly IIm ka Aagan and Suno Kahani telecast on PTV's TeleSchool channel, making educational content accessible to the Deaf so they can learn alongside their hearing peers.

BASIC UTILITY SURVEY

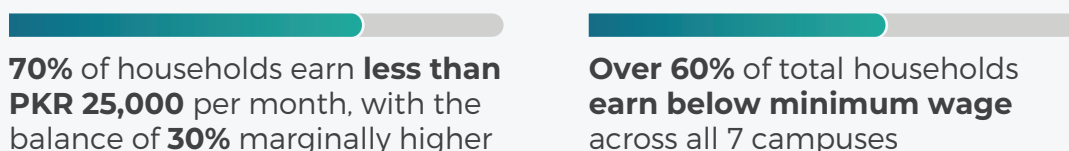
We conducted a survey to assess the availability of basic facilities among households of students enrolled in our school system. Data collected is guiding the planning of the upcoming Distance Learning Program and continuing Ration Program.

SURVEY OF FAMILIES WITH STUDENTS ENROLLED IN DEAF REACH

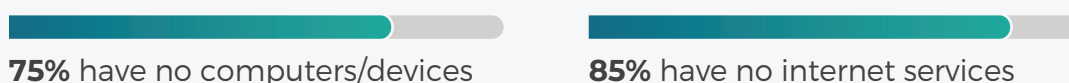
DEAF FAMILY MEMBERS



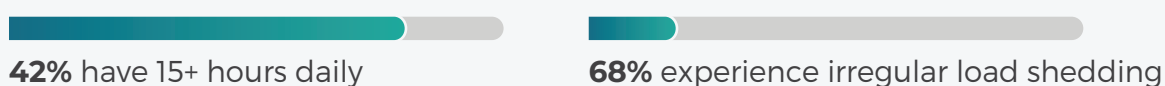
MONTHLY INCOME



ELECTRONIC DEVICES AND INTERNET SERVICES



AVAILABILITY OF ELECTRICITY



GOING FORWARD: THE DISTANCE LEARNING PROGRAM

Covid-19 is an undeniable reality for the foreseeable future, and we are continuing to modify our operations to ensure the ongoing education and well-being of our students and their families. **To accomplish this, we are implementing a Distance Learning Program.**

As the household survey shows, Deaf Reach students live in low-income remote areas and do not have internet access. They have been trained in computer use and maintenance at school, and are well versed with digital content.

CONTENT AND FOCUS

All digital resources in Pakistan sign language (PSL) are loaded on low-cost computer units and distributed to our students and their families. The academic content is supplemented by work sheets, weekly lesson plans, mapped student learning outcomes, and mentoring and home visits by teachers. A phone and visitation system will be in place to answer any questions.

The digital content in PSL will include the following facets:

- Academic Distance Learning: Curricular content in sign language following the main subjects in each grade level, class 1 – 12.
- Skills Training Learning: Curricular content in sign language covering key skills for older students.
- Safeguarding, Health and Well-being: Content covering child and parental health, mental and emotional well-being, practical guidance and information, and trauma management relating to the Covid-19 crisis.
- Training Sessions and Material: Ongoing training and support sessions for parents in the form of video content during current Covid-19 lock-down, and subsequently conducted at the campuses in small groups in line with social distancing measures.



CONTENT CREATION AND PROJECT BENEFICIARIES

We have set up in-house studios at two of our Deaf Reach campuses (Karachi and Rashidabad), and the teachers are working to film sign language lectures for each of the main subjects for classes 1 – 12. We will also film vocational training content for the older students, so they can continue their skills training education, leading to employment.



- Our 1,200 students and their families (average 8 per family) will benefit from this content, completing their grade level requirements even if schools fail to reopen. A total of 8,000+ beneficiaries
- In addition, this content will be posted on the PSL website (www.psl.org.pk), and the PSL app, making it widely available free of cost to deaf children and their families, schools, and teachers of the Deaf across Pakistan. A total of 50,000+ beneficiaries

HOW YOU CAN **HELP**

The Deaf Reach Distance Learning Program will continue to provide opportunities for low income marginalized deaf children to get a high-quality education while they cannot attend school. The resources are a replication of their classroom materials and enable their ongoing education and retention of critical language skills until Deaf Reach Schools are able to resume classes.

The program and student scholarships are sponsored via donations by concerned individuals, corporates, and general philanthropy. FESF is eligible for Zakat, registered with the Securities & Exchange Commission of Pakistan (SECP) and Pakistan Center for Philanthropy (PCP), and is fully Shariah compliant.

STUDENT SPONSORSHIP (PER YEAR)	
Sponsor 15 students	Rs. 1,350,000/-
Sponsor 50 students	Rs. 4,500,000/-
Sponsor 100 students	Rs. 9,000,000/-
Sponsor 1 Student (PKR 7,500 per month)	Rs. 90,000/-

Student sponsorship includes: Development of sign language learning resources for each grade; teachers' salaries; low-cost laptop device for student home use; regular home visits by staff; lesson plans, worksheets, books and stationery; Parents' training program; Teacher training program; Ration program.

Donate Online:

<https://deafreach.com/donate-now/>

Deposits:

Cross Check: Family Educational Services Foundation
Bank Name: Meezan Bank
Account Title: Family Educational Services Foundation
Branch code: 0196
Account Number: 0196-0101394980
IBAN No: PK28MEZN0001960101394980
Swift Code: MEZNPCKAGR

Website

www.fesf.org.pk

Short Info Video

www.youtube.com/watch?v=nC3C6BCN-Qc

Shariah Certificate link

<https://bit.ly/3gK1H0N>